

KENT VALLEY

ECONOMIC DEVELOPMENT

A global aerospace and advanced manufacturing hub in the Seattle Metro Area. Home to the world's leading aerospace, manufacturing and global distribution companies, the region is fueled by a legacy of innovation, trade and supply chain expertise, with a world-class workforce - making it a national leader for modern industry.

12,000+
COMPANIES IN KENT VALLEY

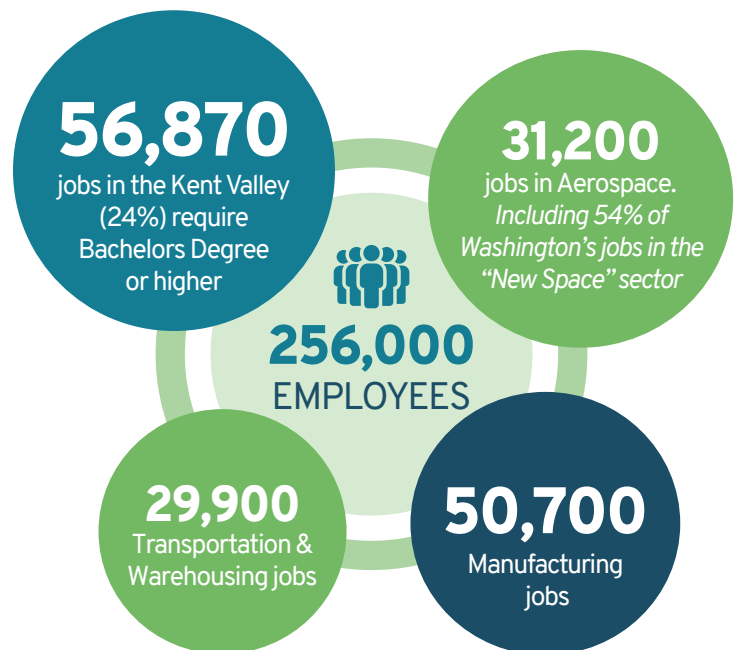
644 MANUFACTURING COMPANIES

235 AEROSPACE COMPANIES

In-Demand Jobs Destination

Kent Valley is a booming jobs destination for candidates with expertise in aerospace, manufacturing and global trade. An experienced workforce is drawn to Kent Valley for career opportunities that can't be found anywhere else.

Since 2005, Kent Valley added 52,000 new jobs. Manufacturing jobs grew 18%, outperforming Pierce and Snohomish counties, and King County as a whole.



Data sources: ECONorthwest Report, April 2022 and Puget Sound Regional Council, 2022 Space Sector Study Update www.psrc.org/our-work/commercial-space-sector-study

Land Your Business in Kent Valley



Your Money Goes Further Here

Kent Valley industrial rents are attractive to price-sensitive tenants while still providing access to a specialized workforce and regional transportation network.



Easy Access to Training

Kent Valley's large, diverse pool of job candidates is fueled by the proximity of Renton Tech, Green River and Highline Colleges, Embry-Riddle Aeronautical University as well as the University of Washington's Seattle and Tacoma campuses in less than a 40-minute commute.

Several esteemed public and private organizations provide specialized training for students and professionals alike.



Accessible Location

Kent Valley's transportation infrastructure, affordable lifestyle, and proximity to major metropolitan markets makes the area an ideal location for people and companies looking to experience the best of the Pacific Northwest.

- Easy access to Seattle-Tacoma International Airport and Ports of Seattle and Tacoma
- Located halfway between Seattle, Bellevue and Tacoma
- Expanding transit options connect people to the region



Abundant Industrial Real Estate Inventory

Kent Valley real estate inventory totals more than 125 million square feet – more than one third of all the industrial property in the Puget Sound region.

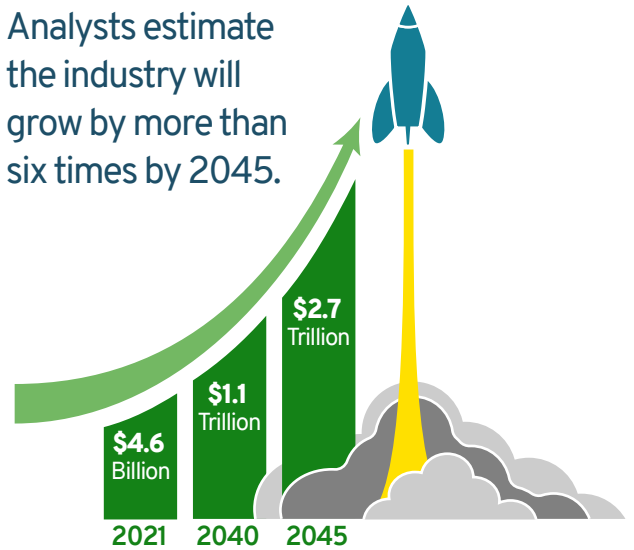
Where High-Tech Meets Manufacturing

13,000+ Space Jobs in WA

Over half of Washington state's **space jobs** are concentrated in **Kent Valley**

Contributes **\$4.6 billion** per year to our state's economy

Analysts estimate the industry will grow by more than six times by 2045.



In Good Company

Expeditors

ISERNIO'S
EST. 1980

SPACEFLIGHT

BOEING

STARBUCKS

STOKE



Robbins

amazon

BLUE ORIGIN

Sysco

ORION

HEXCEL

MACRINA BAKERY

ALASKAN COPPER & BRASS COMPANY

SEATTLE CHOCOLATES

DELTA

STARFISH SPACE

PACCAR Inc.

Sasumi
THE ORIGINAL

Oberto

FATIGUE TECHNOLOGY

EXOTIC METALS
FORMING COMPANY LLC

RedDOT

STARFISH SPACE

OMAX
ABRASIVE WATERJETS

LEO STELLA

W: KentValleyWA.com

E: Info@KentValleyWA.com

Kent Valley Economic Development

P: 253-856-5454

A: 220 Fourth Ave. S., Kent, WA 98032

KENT VALLEY
ECONOMIC DEVELOPMENT